

## TRAYS

**Shallow – 75mm(D)**

See page 146 for individual prices/codes

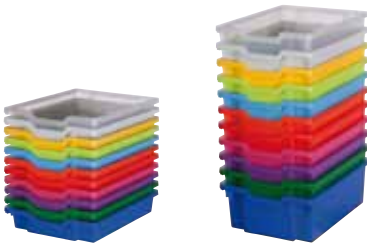
**Deep – 150mm(D)**

**Extra deep – 225mm(D)**

Individual prices available on request

**Jumbo – 300mm(D)**

Individual prices available on request



Blue/Cool Blue/Purple/Red/Orange/Pink/Yellow/Green/Lime/Grey/Frost



Blue/Red/Yellow/Green



Blue/Cool Blue/Orange/Yellow/Green/Lime/Frost

## HIGH PRESSURE LAMINATE TABLETOPS



**Beech**  
6460

**Maple**  
H1521

**Grey**  
6466

**Grey Fleck**  
5455

## CARCASE



**Beech**  
D382

**Maple**  
D375

**Grey**  
U112

## METALWORK



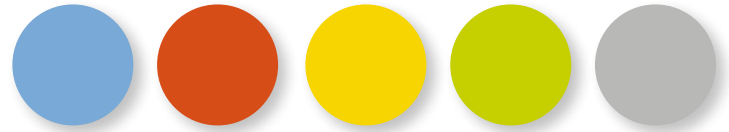
**Black**  
RAL9005

**Dark grey**  
RAL7031

**Light Grey**  
RAL7004

**Velspar Silver**  
FAN7621

## JUNIOR COLOURS



**Cool Blue**

**Orange**

**Yellow**

**Lime**

**Dove Grey**

## 24/7 FABRIC for durability



**Lead**  
IF058

**Clipper**  
IF111

**Claret**  
IF033

**Red**  
IF011

**Juniper**  
IF521

Composition

67% Wool, 33% FR Viscose Blend

Fire Retardancy

BSEN 1021-1:2006 (cigarette)

BSEN 1021-2:2006 (match)

BSEN 7176:2007 Low Hazard

BSEN 7176:2007 Medium Hazard

BS 5852 Section 4 Ignition source 5

Abrasion Resistance Tested in accordance

with BS2543 1995/2004

75,000 Martindale cycles.

## FABRIC PLUS for new exciting colours and closer texture



**Khaki**  
OMP640

**China**  
OMP628

**Marine**  
OMP649

**Heather**  
OMP611

**Red**  
OMP621

**Swizzle**  
OMP648

Composition

100% Polyester Non metallic dyestuffs

Fire Retardancy

BSEN 1021-1:2006 (cigarette)

BSEN 1021-2:2006 (match)

BSEN 7176:2007 Low Hazard

BSEN 7176:2007 Medium Hazard

BS 5852 Section 4 Ignition source 5

Abrasion Resistance Tested in accordance

with BS2543 1995/2004

100,000 Martindale cycles.

Recyclable

## TRESPA ATHLON WORKTOPS



**Silver Grey**  
E0-02

**Soft White**  
E0-00

**Icy Blue**  
E25-01

**Sand**  
E3-01

**Speckled Silver Grey**  
S0-02

**Speckled Soft White**  
S0-00

**Speckled Icy Blue**  
S25-01

**Speckled Sand**  
S3-01